

(Continued from page 1)

NASCO, the North America SuperCorridor Coalition Inc., has received \$2.5 million in earmarks from the U.S. Department of Transportation to plan the NAFTA Super Highway as a 10-lane limited-access road (five lanes in each direction) plus passenger and freight rail lines running alongside pipelines laid for oil and natural gas. A stunning graphic shows the scale of the overall corridor at their website: [www.nascocorridor.com](http://www.nascocorridor.com)

At the Kansas City SmartPort, the containers from the Far East can be transferred to trucks going east and west. Kansas City Southern, or KCS, on Jan. 1, 2005, took control of The Texas Mexican Railway Company and the U.S. portion of the International Bridge in Laredo, Texas. In April of 2005, KCS purchased the controlling interests in Transportacion Ferroviaria Mexicana, which KCS promptly renamed the Kansas City Southern de Mexico, or KCSM.

Within the Department of Commerce (site: [www.commerce.gov](http://www.commerce.gov)) is an SPP office dedicated to coordinating the working groups within the executive branches of the U.S., Mexico and Canada which are involved with creating the regulatory framework for the Security and Prosperity Partnership. The SPP agreement was signed on March 23, 2005 in Waco, TX by President George W. Bush, President Vicente Fox, and then-Prime Minister Paul Martin. Regular announcements are made in the press releases from the Secretary of Commerce about progress on SPP-related issues.

As with the introduction of the zebra mussel from Asia to the Great Lakes by container ships, a corridor for rapid transport of preinspected, sealed containers from Asia to Kansas City, MO raises many questions about environmental impacts which are outside the

(Continued on page 4)

(Meetings Continued from page 1)  
searching wild candidate areas and developing wilderness legislation for possible Congressional action. For more information, contact John Stansfield, 303-660-5849 or e-mail [jorcstan@juno.com](mailto:jorcstan@juno.com)

**Thursday, August 3 6 pm**  
A Celebration of the Browns Canyon Wilderness with the CCWC—see description, front page.

One of the ways you can help our local group use our limited funds more effectively is by opting to receive the newsletter electronically. Simply send an email to [jane.ard-smith@lexisnexis.com](mailto:jane.ard-smith@lexisnexis.com) to get started!

## Chair's Corner

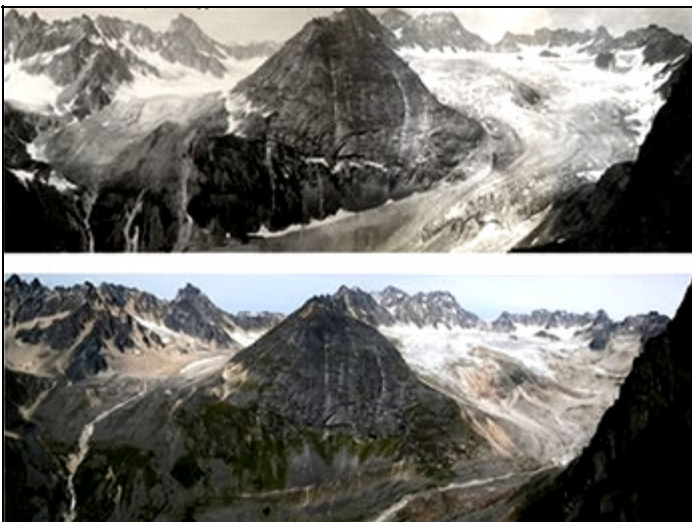
by Jane Ard-Smith, PPG Chair

In my last "Chair's Corner," I asked for your ideas on how to infuse the environmental movement with new enthusiasm and vigor. One member, Bill Beaudin, took up the challenge and began formulating a plan for the Pikes Peak Group (PPG). Under his plan, PPG would develop a local mission statement, evaluate our members' skills, and then identify and prioritize projects based on the mission statement and our members' skill sets.

I like the approach, but it seems a daunting task. I also have a number of questions – for myself and PPG. Do I have the time, energy, and inclination to help revamp the

PPG? Are the other PPG leaders interested and so inclined? How do we reach out to members for their support and input? Is now the right time for such an endeavor? I'd love your feedback and thoughts.

On another topic, the unusually hot weather has me thinking about global warming. If you haven't done so already, I encourage you to see the critically acclaimed documentary "An Inconvenient Truth." The movie poster proclaims it the most terrifying movie you will ever see. It certainly may be one of the most important.



These photos provided by the National Park Service show Hidden Creek Glacier in Denali National Park, Alaska, in 1916, top, and the same glacier photographed in 2004. (AP Photo/S.R. Capps 1916, R. D. Karpilo 2004, Courtesy of the National Park Service)

**"Some truths are hard to hear, because if you really hear them—and understand that they are in fact true— then you have to change. And change can be quite inconvenient."**

— Al Gore

## More Outings With CCWC and Sierra Club

**July 9, Sunday**  
**Farnum Peak Proposed Wilderness Boundary Survey 4-Wheel Drive and Hike**  
Attention, hikers with 4-wheel drives! Sierra Club and Central Colorado Wilderness Coalition need you — and your high-clearance vehicle — to help locate wilderness boundaries for the Farnum Peak area northwest of Lake George. We will do about two miles of easy to moderate (250-foot elevation gain) hiking, as well. Come learn some fundamental aspects of wilderness field work. For more information and to register, contact John Stansfield, 303-660-5849 or e-mail [jorcstan@juno.com](mailto:jorcstan@juno.com) by 5pm July 8.

**October 7, Saturday**  
**Pikes Peak West Proposed Wilderness**  
Mark your calendar for a moderate hike in the scenic season to the wild west side of Pikes Peak. With an elevation gain of 1,000 feet in six miles, the trip will explore the area's high country primitive attributes, with participants learning details of the wilderness proposal. For more information on the hike, which is co-sponsored by Central Colorado Wilderness Coalition, and to register, contact John Stansfield, 303-660-5849 or e-mail [jorcstan@juno.com](mailto:jorcstan@juno.com) by 4 pm October 6.

**Pikes Peak Group's Sierra Club Store is OPEN!**  
**Go to:** [www.rmc.sierraclub.org/ppg/PPGstore.html](http://www.rmc.sierraclub.org/ppg/PPGstore.html) for tee shirts, organic fair-trade coffee and teas, books and photographic prints.